
ZOOMLION

ZOOMLION ZTC1300V853 TRUCK CRANE

TECHNICAL SPECIFICATIONS

ZTC1300V853/27Y

Zoomlion Heavy Industry Science & Technology Co.,Ltd.

ZOOMLION ZTC1300V853 TRUCK CRANE

TECHNICAL SPECIFICATIONS

ZTC1300V853/27Y

Specifications, complete vehicle

Product model

Model in auto industry: ZTC1300V853

Model in engineering industry: ZTC1300V

Code: ZTC1300V853

Product appearance

Main boom: 85m Jib: 33.5m Counterweight: 49t



Technical data

Table 1 Technical data

Item		Value	Remarks
Work performance	Max. rated lifting capacity	t	130
	Max. load moment of basic boom	t.m	483
	Max. load moment of main boom (fully extended)	t.m	176.4
	Max. lifting height of basic boom	m	14
	Max. lifting height of main boom	m	85
	Max. lifting height of jib	m	116.5
Work speeds	Max. hoist rope speed (Main winch)	m/min	135
	Boom derricking up time	s	70
	Boom extending time	s	880
	Slewing speed	r/min	0 - 1.6
Driving	Max. operation altitude	m	2000
	Max. driving speed	km/h	80
	Max. gradeability	%	45
	Min. turning diameter	m	≤24
	Min. ground clearance	mm	330
	Limits for exhaust pollutants and smoke		China V
	Front overhang angle	°	18
Rear overhang angle	°	13	
Mass	Deadweight in driving condition	kg	54900
	Complete vehicle kerb mass	kg	54705
	Single axle load	kg	12000/12000/10450/10450/10000
Dimensions	Overall dimensions (LxWxH)	mm	16400x3000x4000
	Outrigger spread (W)	m	Completely extended: 8.2 m; intermediate extended: 5.47 m
	Outrigger spread (L)	m	7.65
	Slewing radius of counterweight tail	mm	5670
	Main boom length	mm	13.9 - 85
	Boom angle	°	-0.5 - 80
	Jib length	m	10.4, 17.5

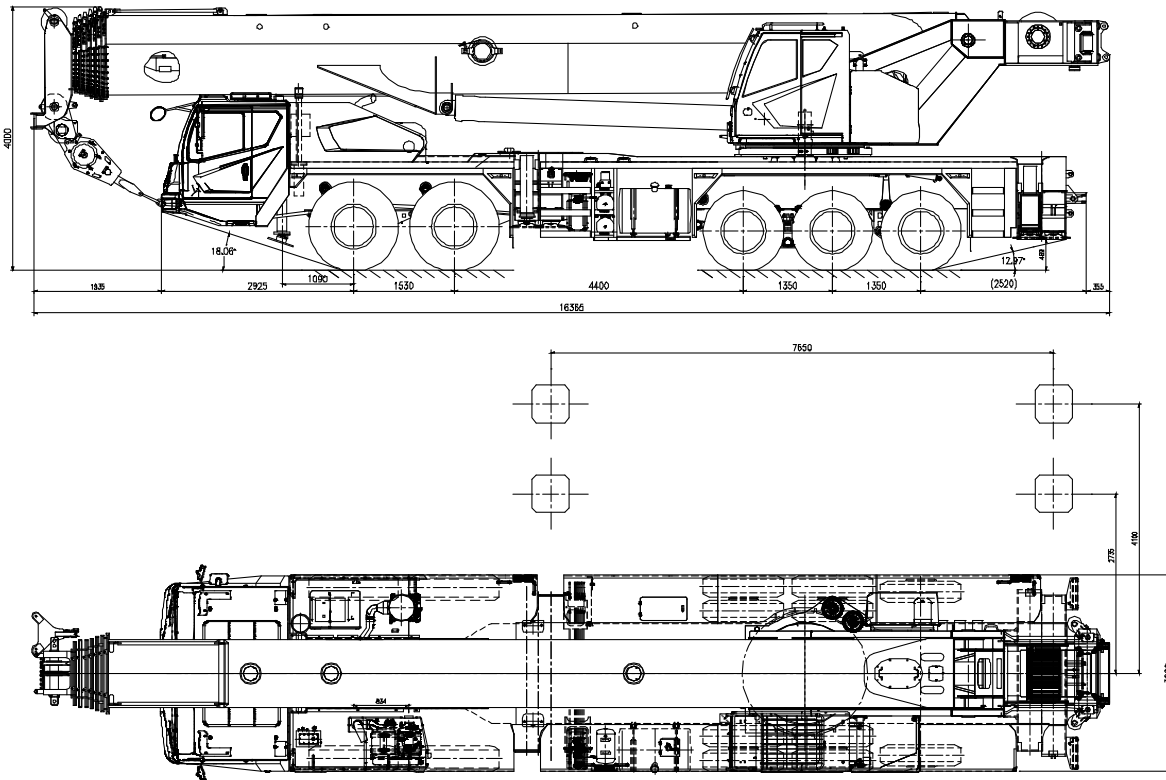
Table of options

Table 2 Options

No.	Description	Remarks
1	Outrigger pads	Overall dimensions: 1550mm*1550mm*120, 4 pieces
2	Extension	Including 2 pieces of 8m extensions
3	Hook	Stand configuration: 60t (ramshorn hook), 8t Optional: 110t, 90t, 70t (ramshorn hook), 25t

Dimensions (unit: mm)

Operation condition

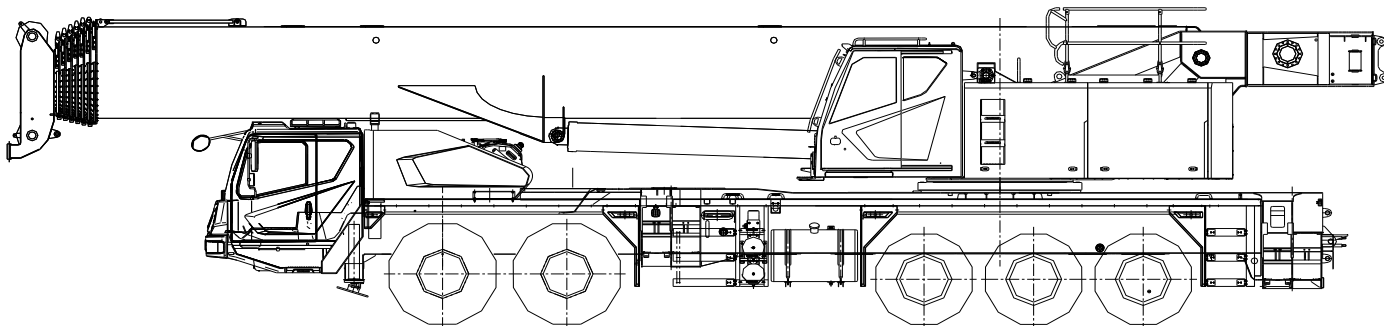


Dimensions in travelling order (unit: mm)

① Road travel mode (55t):

These components such as the hook, the rooster sheave, the outrigger pads, the jib & the jib bracket, the main hoist rope, the auxiliary winch & the wire rope, the left front sliding beam assy., the spare tire and the counterweight are removed from the crane.

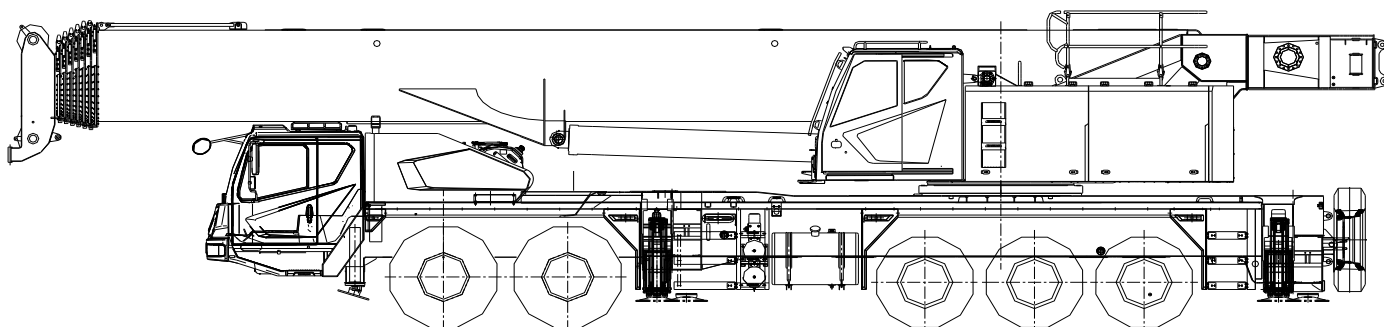
For long distance travel, vehicle speed is below 80 km/h and max. permissible gradeability is 45%.



② Road travel mode (57.1t):

These components such as the rooster sheave, the jib & the jib bracket, the auxiliary winch & the wire rope and the counterweight are removed from the crane. 60t hook is attached with the vehicle.

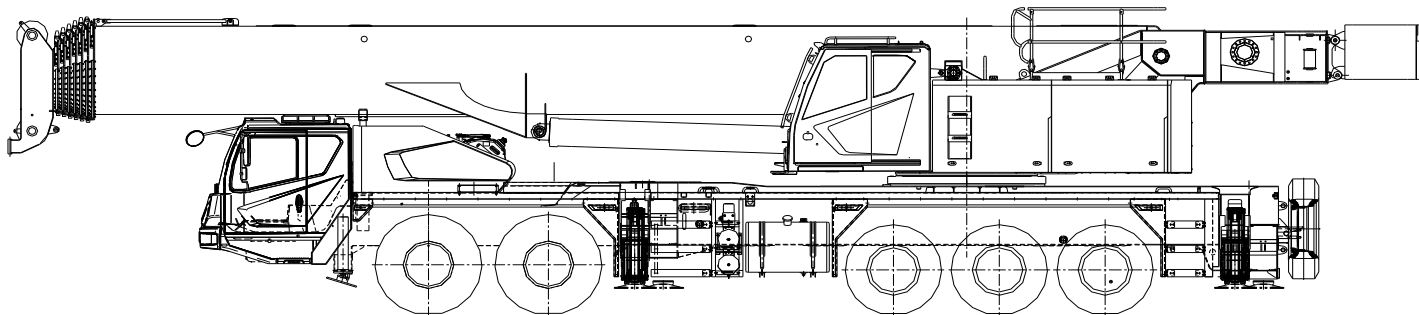
For short distance off-road transit, vehicle speed is below 80 km/h and max. permissible gradeability is 40%.



③ Off-road transit mode (66.1t):

These components such as the rooster sheave, the jib & the jib bracket, the auxiliary winch and the wire rope are removed from the crane. 60t hook and 9t fixing counterweight are attached with the crane under this mode.

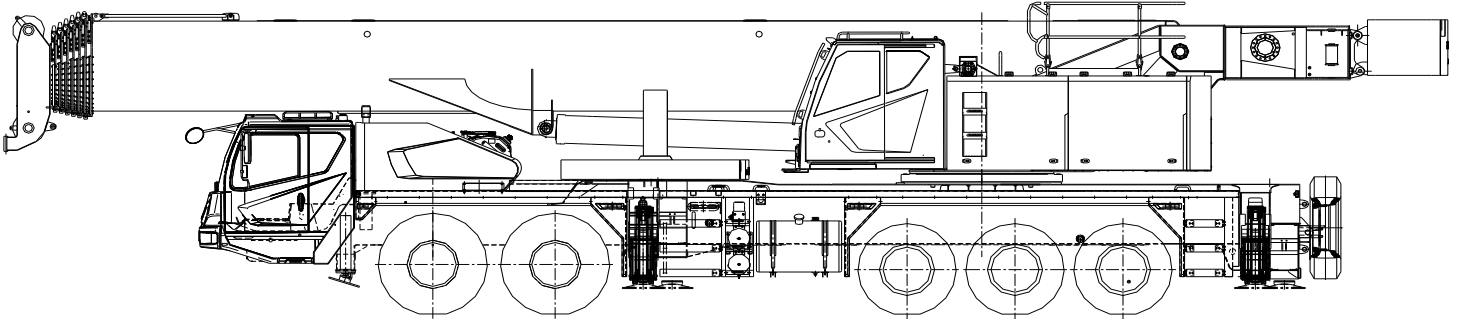
For short distance travelling, vehicle speed is below 80 km/h and max. permissible gradeability is 32%.



④ Off-road transit mode (75.1t):

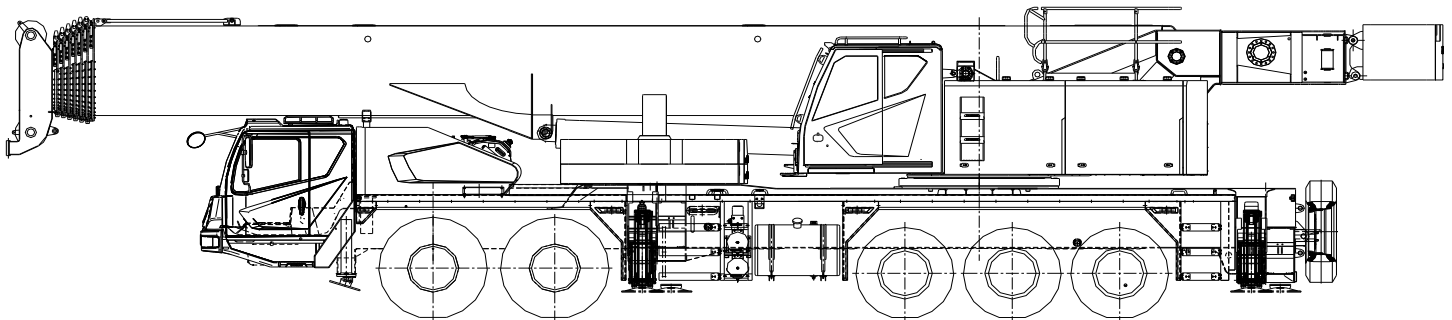
These components such as the rooster sheave, the jib & the jib bracket, the auxiliary winch and the wire rope are removed from the crane. 9t fixing counterweight and 9t lower counterweight as well as 60t hook are with the crane under this mode.

For short distance travelling, vehicle speed is below 50 km/h and max. permissible gradeability is 28%.

**⑤ Off-road transit mode (84.1t):**

These components such as the hook, the rooster sheave, the jib & the jib bracket, the auxiliary winch and the wire rope are removed from the crane. 9t fixing counterweight and 18t movable counterweight as well as 60t hook are with the crane under this mode.

For short distance travelling, vehicle speed is below 50 km/h and max. permissible gradeability is 24%.



Weight distribution in travelling order (unit: t)

Table 3 Weight distribution in travelling order

	1	2	3	4	5	Total weight (kg)
①	12000	12000	10450	10450	10000	54900
②	12480	12480	11070	11070	10000	57100
③	9120	9120	18930	18930	10000	66100
④	12390	12390	20160	20160	10000	75100
⑤	15650	15650	21400	21400	10000	84100

Hook (transported individually)

Table 4 Hook

Specification	Weight (t)	Transport dimensions (mm)	Fall	Single/double hook	Standard/optional configuration
110t	1.28	1835×805×650	14	Double	Optional
90t	1.05	1665×650×755	14	Double	Optional
70t	0.92	1580×650×700	10	Double	Optional
70t	0.9	1675×650×580	10	Single	Optional
60t	0.75	460×650×1580	8	Double	Standard
25t	0.58	1410×650×390	3	Single	Optional
8t	0.38	φ405×845	1	Auxiliary hook	Standard

Wire rope

Table 5 Wire rope

	Diameter (mm)	Length (m)	Max. pulling force for single rope (t)
Main hoist rope	φ20	340	8.5
Auxiliary hoist rope	φ20	220	9

Counterweight (transported individually)

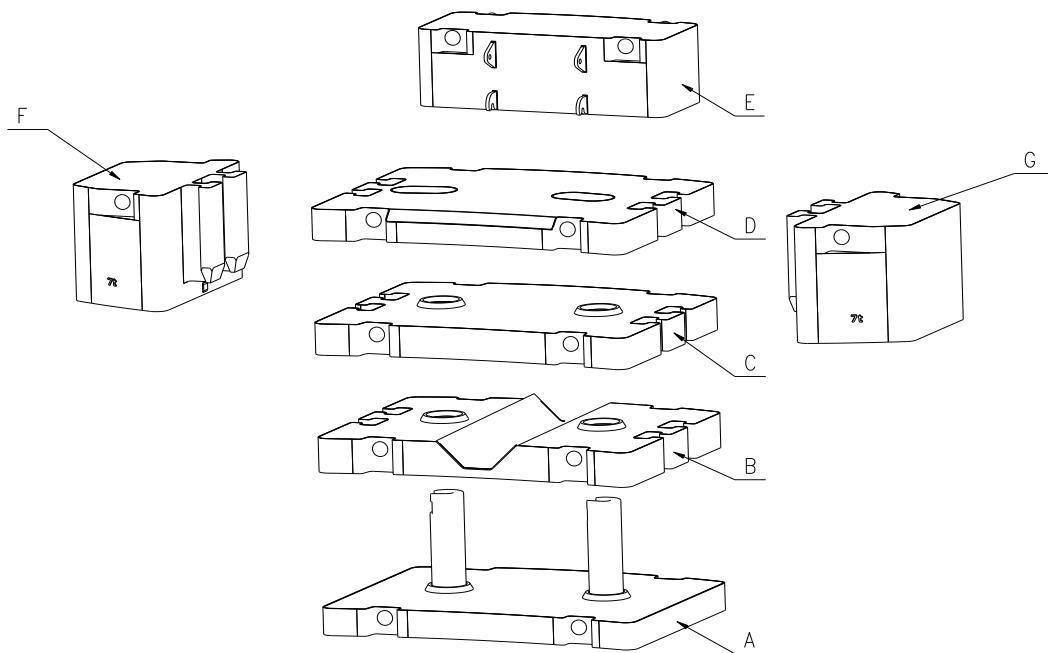


Table 6 Counterweight


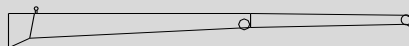
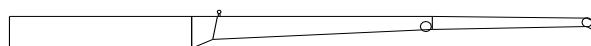
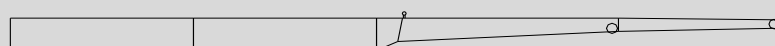
	Description	Mass (t)	Transport dimensions (mm)	Quantity (piece)
A	Lower counterweight	9	3100x2450x2100	1
B	Intermediate counterweight	9	3100x2450x500	1
C	Intermediate counterweight	9	3100x2450x500	1
D	Upper counterweight	9	3100x2450x400	1
E	Fixing counterweight	9	1200x2400x840	1
F	Side counterweight	2	1950x950x670	1
G	Side counterweight	2	1950x950x670	1


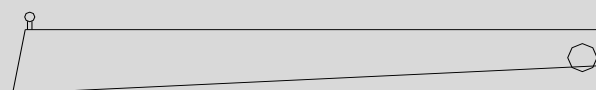
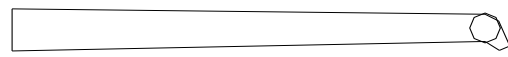
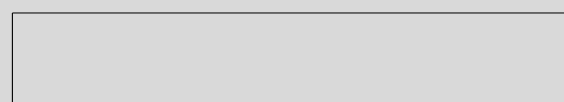
Table 7 Counterweight combinations (Unit: piece)

Combinations	A	B	C	D	E	F	G
0t	0	0	0	0	0	0	0
9t	0	0	0	0	1	0	0
18t	1	0	0	0	1	0	0
27t	1	1	0	0	1	0	0
36t	1	1	1	0	1	0	0
40t	1	1	1	1	1	0	0
45t	1	1	1	1	0	1	1
49t	1	1	1	1	1	1	1

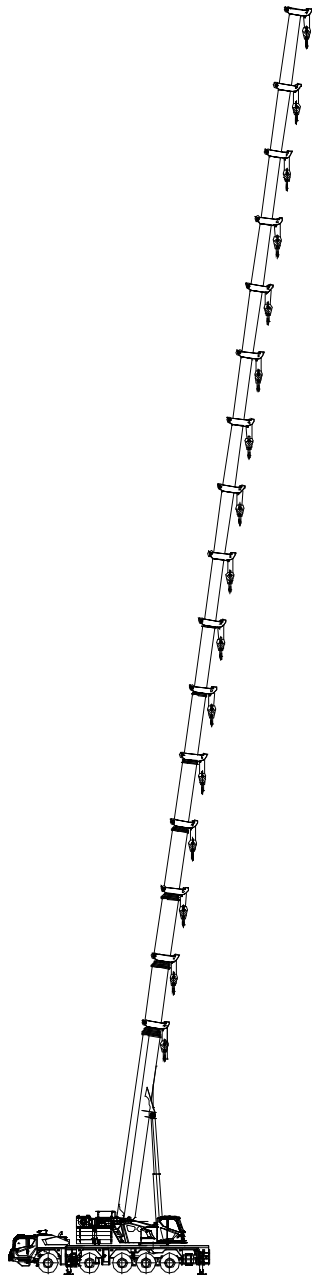
Boom combinations

Jib

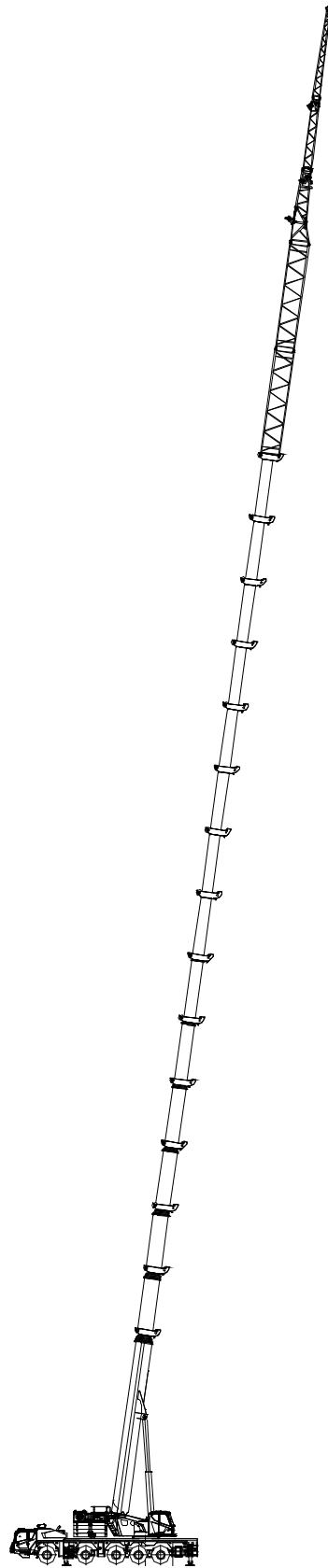
10.4m	
17.5m	
25.5m	
33.5m	

Components	Structure type	Dimensions (L*W*H) mm	Mass kg
Adaptor		1300x720x1000	120
Jib section I		9800x720x880	430
Jib section II		6700x500x280	240
8 m extension		8000x720x1300	520

OM combinations



Main boom



Main boom + Jib

Lifting capacity tables / Lifting height charts

Main boom OM: 13.9m – 85m

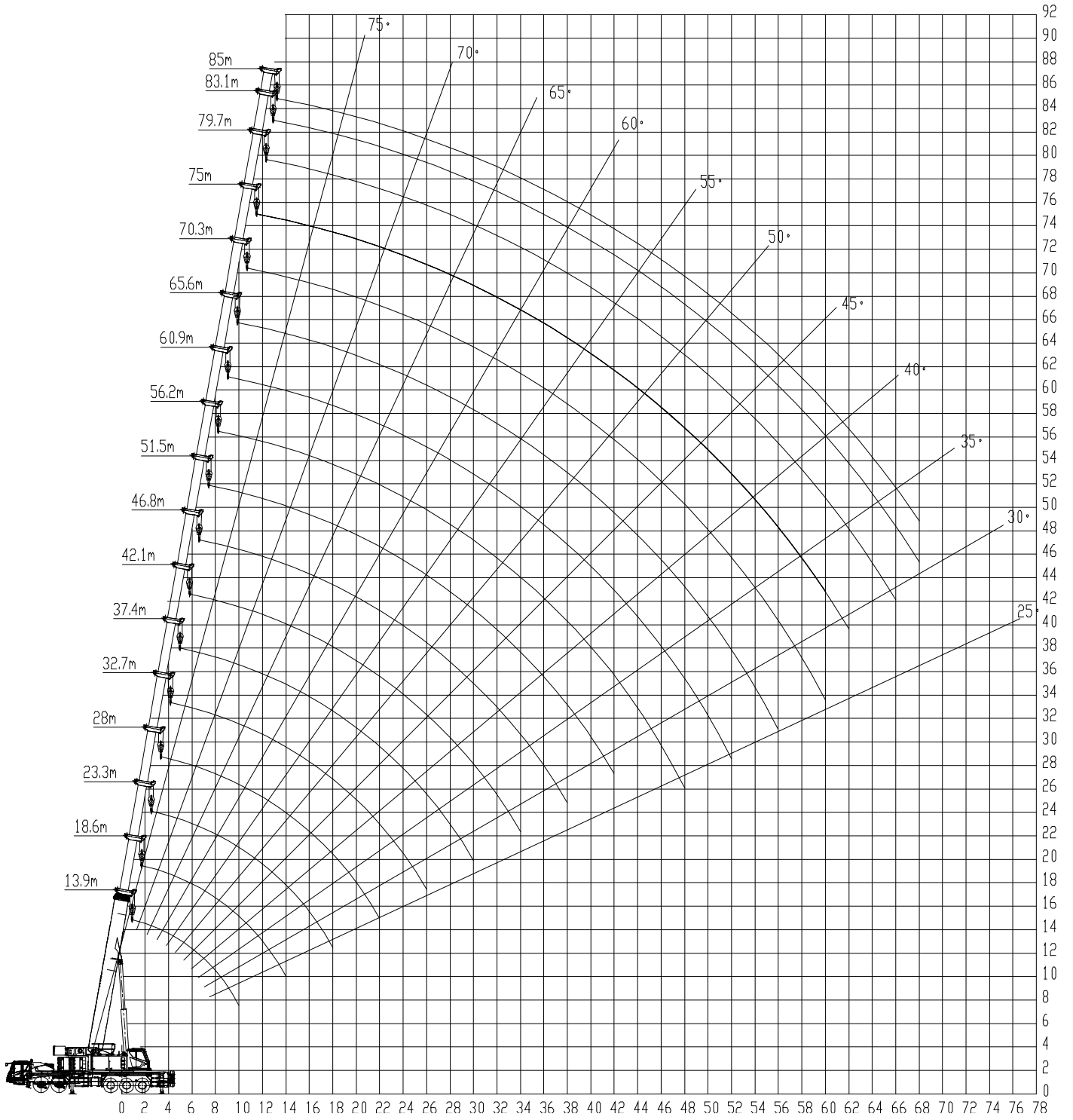


Table 8-1 Main boom

Unit: t

Outriggers completely extended 8.2 m, with 49 t counterweight, counterweight moved backwards, over full range																
Working radius (m)	Boom length (m)														Working radius (m)	
	13.9★	18.6	18.6	18.6	18.6	18.6	18.6★	23.3	23.3	23.3	23.3	23.3	23.3	23.3★		
3.0	130	48.5	55	72	75	92	95								3.0	
3.5	105	46	55	70	75	92	93	22	46	51	70	75	90	90	3.5	
4.0	100	43.5	55	68	75	88	88	21	44	48	68	72	84	85	4.0	
4.5	95	41.7	55	65	75	86	86	20	42	46	66	70	79	80	4.5	
5.0	89	39.5	55	61	75	80	80	19	40	44	63	67	73	73	5.0	
6.0	78	36.5	49	58	73	74	74	18	36	39	56	60	65	66	6.0	
7.0	69	33.5	44.5	52	66	67	67	16.8	32.5	36	51	55	62	63	7.0	
8.0	58	31.5	40.5	47.3	58	59	59	15.3	30	32.5	46	50	57	58	8.0	
9.0	51	29.5	37.5	43.3	52	52	52	14.2	27.5	30	42	46	51	51	9.0	
10.0	45	27.5	34	39.8	45.5	45	44.5	13.2	25.5	27.5	39	42	47	46.5	10.0	
12.0		24.5	30	34.3	38	37	36.5	11.5	22.5	23.5	34	37	38	37.5	12.0	
14.0		22.5	26.5	30.2	31	30.5	30	10	19.6	21	30	32	31.5	31	14.0	
16.0								9	17.5	18.5	26.5	27.5	26.5	26	16.0	
18.0								8.2	15.8	16.8	24	23	22.5	22.1	18.0	
20.0															20.0	
22.0															22.0	
24.0															24.0	
26.0															26.0	
28.0															28.0	
30.0															30.0	
32.0															32.0	
34.0															34.0	
36.0															36.0	
38.0															38.0	
40.0															40.0	
42.0															42.0	
44.0															44.0	
46.0															46.0	
48.0															48.0	
50.0															50.0	
52.0															52.0	
54.0															54.0	
56.0															56.0	
58.0															58.0	
60.0															60.0	
62.0															62.0	
64.0															64.0	
66.0															66.0	
68.0															68.0	
70.0															70.0	
Reeving	14	13						13						Reeving		
Hook	110t														Hook	
Telescoping mode	I	1	1	1	1	1	1	1	1	1	1	1	1	1	2	I
	II	1	1	1	1	1	1	2	1	1	1	1	1	2	2	II
	III	1	1	1	1	1	2	1	1	1	1	1	2	2	1	III
	IV	1	1	1	1	2	1	1	1	1	1	2	2	1	1	IV
	V	1	1	1	2	1	1	1	1	1	2	2	1	1	1	V
	VI	1	1	2	1	1	1	1	1	1	2	2	1	1	1	VI
	VII	1	2	1	1	1	1	1	3	2	1	1	1	1	1	VII

Note:

The rated lifting capacity marked with the asterisk (*) adopts the 110t hook. The lifting capacity “130t” is a nominal one.

Table 8-2 Main boom

Unit: t

Outriggers completely extended 8.2 m, with 49 t counterweight, counterweight moved backwards, over full range																
Working radius (m)	Boom length (m)														Working radius (m)	
	28	28	28	28	28	28	28	28	32.7	32.7	32.7	32.7	32.7	32.7		32.7
							★								★	
3.0																3.0
3.5																3.5
4.0	23	21	42	52	67	76	76									4.0
4.5	22	20.5	40	51	62	73	76									4.5
5.0	21	18.5	37	49	58	72	73	15	19	16	40	51	63	65	5.0	
6.0	20	16.6	34	44.5	52	65	66	13.5	18	15	36.5	47	60	65	6.0	
7.0	18	15	31	40	47	60	61	12.5	16.5	13.8	33.5	43	54	60	7.0	
8.0	16.5	13.5	28	37	43	56	57	11.3	15	12.5	30	39	49	58	8.0	
9.0	15.6	12.5	25.6	34	39.5	51	51	10.4	14	11.5	28	35.5	45	51	9.0	
10.0	14.6	11.5	23.8	32	36.5	47.6	47.6	9.6	12.8	10.5	26.5	33	42	47	10.0	
12.0	13.2	9.8	20.5	28	31.5	38.3	38.3	8.3	11	8.7	23	28.2	36.5	38	12.0	
14.0	12	8.6	18	24.5	27.5	32	31.6	7.1	9.8	7.7	20	25	32	31.5	14.0	
16.0	11	7.5	16	22	24	27	26.6	6.3	8.6	6.7	18	22	27.5	26.5	16.0	
18.0	9.8	6.8	14.3	20	21.8	23	22.3	5.7	7.8	5.9	16.5	19.8	23.5	22.5	18.0	
20.0	8.9	6.1	13	18.2	20	19.2	18.5	5.2	7	5.3	14.8	18	20.3	18.6	20.0	
22.0	8.1	5.5	12	17	18	16.5	15.6	4.7	6.4	4.8	13.6	16.5	17.2	16	22.0	
24.0								4.2	6	4.3	12.5	15	14.6	13.5	24.0	
26.0								3.9	5.5	4	11.7	13.5	12.8	11.5	26.0	
28.0															28.0	
30.0															30.0	
32.0															32.0	
34.0															34.0	
36.0															36.0	
38.0															38.0	
40.0															40.0	
42.0															42.0	
44.0															44.0	
46.0															46.0	
48.0															48.0	
50.0															50.0	
52.0															52.0	
54.0															54.0	
56.0															56.0	
58.0															58.0	
60.0															60.0	
62.0															62.0	
64.0															64.0	
66.0															66.0	
68.0															68.0	
70.0															70.0	
Reeving	11							9							Reeving	
Hook	90 t														Hook	
Telescoping mode	I	1	1	1	1	1	1	2	1	1	1	1	1	1	2	I
	II	1	1	1	1	1	2	2	1	1	1	1	1	2	2	II
	III	1	1	1	1	2	2	2	1	1	1	1	2	2	2	III
	IV	1	1	1	2	2	2	1	1	1	1	2	2	2	2	IV
	V	1	1	2	2	2	1	1	1	2	3	2	2	2	1	V
	VI	2	3	2	2	1	1	1	3	3	2	2	2	1	1	VI
	VII	3	2	2	1	1	1	1	3	2	2	2	1	1	1	VII

Table 8-3 Main boom

Unit: t

Outriggers completely extended 8.2 m, with 49 t counterweight, counterweight moved backwards, over full range																
Working radius (m)	Boom length (m)														Working radius (m)	
	37.4	37.4	37.4	37.4	37.4	37.4	37.4 ★	42.1	42.1	42.1	42.1	42.1	42.1	42.1 ★		
3.0															3.0	
3.5															3.5	
4.0															4.0	
4.5															4.5	
5.0															5.0	
6.0															6.0	
7.0	13	12	14.5	18.5	36	48	56								7.0	
8.0	12.5	11	13.5	17	33	44	52	10.5	12	15	19	23	38	46	8.0	
9.0	11.5	10	12.5	15.6	31	40	48	9.6	11.2	14	17.4	21	35	45	9.0	
10.0	10.6	9.2	11.5	14.5	29	38	46	8.8	10.3	12.8	16	19.5	33	42	10.0	
12.0	9.3	7.9	10	12.3	25	33	37	7.5	8.8	11.1	13.8	18	29	38	12.0	
14.0	8.2	6.9	8.6	10.6	22	29	31	6.4	7.7	9.7	12	16.6	26	33	14.0	
16.0	7.3	6	7.7	9.4	20	26	26	5.6	6.8	8.5	10.6	14.5	23.7	28	16.0	
18.0	6.5	5.3	6.8	8.3	18.5	23	22.5	5	6	7.6	9.5	12.8	21.5	24.2	18.0	
20.0	5.9	4.6	6.2	7.3	16.7	21	19.5	4.4	5.4	6.7	8.5	11.3	19.6	20.5	20.0	
22.0	5.3	4.2	5.6	6.7	15.2	18.5	16.5	3.9	4.9	6	7.8	10	18	17.6	22.0	
24.0	4.9	3.8	5.1	6	14	15.5	14.3	3.5	4.4	5.4	7	9	16.5	15.1	24.0	
26.0	4.5	3.4	4.6	5.6	13	13.6	12.3	3.2	4	5	6.4	8.2	15	13.2	26.0	
28.0	4.2	3.1	4.2	5	12	12	10.5	2.8	3.6	4.4	5.9	7.3	13.3	11.5	28.0	
30.0	3.9	2.8	4	4.6	11.2	10.5	9.2	2.6	3.3	4	5.4	6.8	11.7	10	30.0	
32.0								2.3	3	3.7	5	6.2	10.5	8.9	32.0	
34.0								2.1	2.7	3.4	4.6	5.3	9.2	7.9	34.0	
36.0															36.0	
38.0															38.0	
40.0															40.0	
42.0															42.0	
44.0															44.0	
46.0															46.0	
48.0															48.0	
50.0															50.0	
52.0															52.0	
54.0															54.0	
56.0															56.0	
58.0															58.0	
60.0															60.0	
62.0															62.0	
64.0															64.0	
66.0															66.0	
68.0															68.0	
70.0															70.0	
Reeving	8							6							Reeving	
Hook	90 t							55 t							Hook	
Telescoping mode	I	1	1	1	1	1	1	2	1	1	1	1	1	1	2	I
	II	1	1	1	1	1	2	2	1	1	1	1	1	2	2	II
	III	1	1	1	1	2	2	2	1	1	1	2	3	2	2	III
	IV	1	1	2	3	2	2	2	1	2	3	3	2	2	2	IV
	V	2	3	3	2	2	2	2	3	3	3	2	2	2	2	V
	VI	3	3	2	2	2	2	1	3	3	2	2	2	2	2	VI
	VII	3	2	2	2	2	1	1	3	2	2	2	2	2	1	VII

Table 8-4 Main boom

Unit: t

Outriggers completely extended 8.2 m, with 49 t counterweight, counterweight moved backwards, over full range																
Working radius (m)	Boom length (m)														Working radius (m)	
	46.8	46.8	46.8	46.8	46.8	46.8	46.8★	51.5	51.5	51.5	51.5	51.5	51.5	51.5★		
3.0															3.0	
3.5															3.5	
4.0															4.0	
4.5															4.5	
5.0															5.0	
6.0															6.0	
7.0															7.0	
8.0															8.0	
9.0	10.2	12	14.5	18.5	23.5	35.5	38								9.0	
10.0	9.3	11	14	17.3	21.8	33	35.5	10	11.6	14.2	18.5	23.5	29	30	10.0	
12.0	8	9.6	12	15	19	29	31	8.7	10.5	12.6	16.5	20.7	26.5	28.5	12.0	
14.0	7.1	8.4	10.6	13.2	16.5	25.5	28	7.6	9	11.3	14.5	18.3	23.5	26	14.0	
16.0	6.2	7.5	9.5	11.7	14.6	22.6	26	6.7	8.1	10.2	13	16.5	21	23	16.0	
18.0	5.6	6.7	8.5	10.5	13	20	23	6	7.2	9.1	11.9	14.8	18.6	20.8	18.0	
20.0	4.9	6	7.7	9.3	11.8	18.5	20.5	5.5	6.6	8.2	10.6	13.5	16.8	18.5	20.0	
22.0	4.4	5.5	6.8	8.3	10.6	16.8	18.3	5	6	7.5	9.6	12.3	15.3	16.7	22.0	
24.0	4	4.9	6.2	7.5	9.6	15.3	15.6	4.5	5.5	6.8	8.7	11.1	13.9	15.1	24.0	
26.0	3.7	4.6	5.6	6.9	8.8	14	13.7	4.1	5	6.3	7.9	10.2	12.6	13.2	26.0	
28.0	3.3	4.1	5.1	6.2	8.2	12.7	12.2	3.8	4.7	5.7	7.3	9.4	11.6	11.5	28.0	
30.0	3	3.8	4.7	5.7	7.5	11.3	10.7	3.4	4.3	5.3	6.7	8.7	10.5	10	30.0	
32.0	2.7	3.4	4.2	5.2	6.8	10	9.5	3.2	4	4.9	6.2	8.1	9.5	9	32.0	
34.0	2.6	3.1	4	4.7	6.3	9	8.5	3	3.7	4.5	5.7	7.6	8.4	8	34.0	
36.0	2.3	2.8	3.6	4.3	5.9	8.1	7.6	2.7	3.4	4.1	5.3	7	7.3	7	36.0	
38.0	2.1	2.6	3.3	4	5.5	7.2	6.7	2.5	3.1	3.7	4.9	6.6	6.5	6.1	38.0	
40.0								2.3	2.9	3.4	4.6	6	5.8	5.4	40.0	
42.0								2.1	2.6	3.1	4.2	5.6	5.1	4.7	42.0	
44.0															44.0	
46.0															46.0	
48.0															48.0	
50.0															50.0	
52.0															52.0	
54.0															54.0	
56.0															56.0	
58.0															58.0	
60.0															60.0	
62.0															62.0	
64.0															64.0	
66.0															66.0	
68.0															68.0	
70.0															70.0	
Reeving	5							4							Reeving	
Hook	55 t														Hook	
Telescoping mode	I	1	1	1	1	1	1	2	1	1	1	1	1	2	3	I
	II	1	1	1	1	2	3	2	1	1	1	2	3	3	2	II
	III	1	1	2	3	3	2	2	1	2	3	3	3	2	2	III
	IV	2	3	3	3	2	2	2	3	3	3	3	2	2	2	IV
	V	3	3	3	2	2	2	2	3	3	3	2	2	2	2	V
	VI	3	3	2	2	2	2	2	3	3	2	2	2	2	2	VI
	VII	3	2	2	2	2	2	2	3	2	2	2	2	2	2	VII

Table 8-5 Main boom

Unit: t

Outriggers completely extended 8.2 m, with 49 t counterweight, counterweight moved backwards, over full range																	
Working radius (m)	Boom length (m)														Working radius (m)		
	56.2	56.2	56.2	56.2	56.2	56.2	★				60.9	60.9	60.9	60.9		60.9	★
3.0																	3.0
3.5																	3.5
4.0																	4.0
4.5																	4.5
5.0																	5.0
6.0																	6.0
7.0																	7.0
8.0																	8.0
9.0																	9.0
10.0																	10.0
12.0	9.3	10.8	13.5	17.5	23.2	24.5				9.5	11.7	14.6	18.5	19			12.0
14.0	8.1	9.7	12.5	16	20.8	23				8.5	10.5	13.5	17	18.6			14.0
16.0	7.2	8.6	11.3	14.5	18.8	21				7.7	9.5	12.3	15.5	18			16.0
18.0	6.6	7.8	10.2	13	17.1	19				7	8.6	11.2	14	16.5			18.0
20.0	6	7.2	9.3	12	15.6	17				6.4	7.9	10.3	13	15.1			20.0
22.0	5.5	6.6	8.5	11	14.3	15.3				5.5	7.3	9.4	12	13.8			22.0
24.0	5	6	7.8	10	13.2	14				5.3	6.7	8.8	11	12.8			24.0
26.0	4.6	5.6	7.2	9.1	12.2	12.7				4.9	6.2	8.1	10	11.6			26.0
28.0	4.2	5.2	6.7	8.4	11.3	11.5				4.6	5.8	7.4	9.2	10.7			28.0
30.0	3.9	4.8	6.2	7.7	10.5	10				4.3	5.4	6.9	8.5	9.6			30.0
32.0	3.7	4.5	5.7	7.2	9.8	8.8				3.9	5.1	6.4	7.8	8.8			32.0
34.0	3.3	4.1	5.3	6.6	9	7.7				3.7	4.7	6	7.3	7.8			34.0
36.0	3.1	3.8	4.9	6.2	8.1	6.8				3.5	4.4	5.6	6.7	6.8			36.0
38.0	2.9	3.6	4.5	5.7	7.2	6				3.2	4.1	5.2	6.3	6.1			38.0
40.0	2.7	3.3	4.2	5.3	6.4	5.2				3	3.8	4.8	5.8	5.3			40.0
42.0	2.5	3	3.8	5	5.7	4.6				2.8	3.7	4.4	5.3	4.6			42.0
44.0	2.3	2.8	3.5	4.6	5	4				2.6	3.3	4.1	4.6	4			44.0
46.0	2.1	2.5	3.3	4.3	4.4	3.4				2.4	3.1	3.8	4.2	3.5			46.0
48.0	1.9	2.3	2.9	4	3.9	2.9				2.3	2.8	3.5	3.7	3			48.0
50.0										2.1	2.6	3.3	3.2	2.6			50.0
52.0										1.8	2.4	2.9	2.8	2.1			52.0
54.0																	54.0
56.0																	56.0
58.0																	58.0
60.0																	60.0
62.0																	62.0
64.0																	64.0
66.0																	66.0
68.0																	68.0
70.0																	70.0
Reeving	4										3					Reeving	
Hook	55 t										25 t					Hook	
Telescoping mode	I	1	1	1	1	2	3				1	1	1	2	3	I	Telescoping mode
	II	1	1	2	3	3	3				1	2	3	3	3	II	
	III	2	3	3	3	3	2				3	3	3	3	3	III	
	IV	3	3	3	3	2	2				3	3	3	3	2	IV	
	V	3	3	3	2	2	2				3	3	3	2	2	V	
	VI	3	3	2	2	2	2				3	3	2	2	2	VI	
	VII	3	2	2	2	2	2				3	2	2	2	2	VII	

Table 8-6 Main boom

Unit: t

Outriggers completely extended 8.2 m, with 49 t counterweight, over full range																
Working radius (m)	Boom length (m)														Working radius (m)	
	65.6	65.6	65.6	65.6 ★		70.3	70.3	70.3 ★		75	75 ★	79.7 ★	83.1 ★	85 ★		
3.0															3.0	
3.5															3.5	
4.0															4.0	
4.5															4.5	
5.0															5.0	
6.0															6.0	
7.0															7.0	
8.0															8.0	
9.0															9.0	
10.0															10.0	
12.0															12.0	
14.0	9.3	11	14	15											14.0	
16.0	8.4	10.2	13	14.6		9	10.8	12		9	9.5				16.0	
18.0	7.7	9.4	12	14.2		8.2	10	11.7		8.5	9.3	7.2			18.0	
20.0	7.1	8.7	11	13.4		7.6	9.1	11.4		8	9	7.2	6.5	6	20.0	
22.0	6.5	8	10	12.2		7.1	8.5	10.7		7.5	8.8	7	6.3	5.8	22.0	
24.0	6	7.4	9.5	11.3		6.5	8	10		7	8.5	6.9	6.1	5.6	24.0	
26.0	5.5	6.9	8.9	10.5		6.1	7.5	9.5		6.6	8	6.7	6	5.5	26.0	
28.0	5.1	6.4	8.2	9.5		5.7	7	8.7		6.2	7.5	6.4	5.8	5.4	28.0	
30.0	4.8	6	7.6	8.9		5.3	6.6	8.3		5.8	7.1	6	5.6	5.3	30.0	
32.0	4.4	5.6	7	8.2		5	6.2	7.6		5.4	6.8	5.8	5.4	5.2	32.0	
34.0	4.1	5.3	6.6	7.5		4.7	5.8	7		5	6.4	5.7	5.2	5	34.0	
36.0	3.9	5	6	6.8		4.4	5.5	6.4		4.8	5.9	5.5	4.8	4.8	36.0	
38.0	3.7	4.7	5.6	6.2		4.1	5.2	5.9		4.5	5.6	5.2	4.6	4.6	38.0	
40.0	3.5	4.4	5.2	5.6		3.9	4.8	5.5		4.2	5.2	4.9	4.4	4.4	40.0	
42.0	3.2	4.1	4.8	4.7		3.7	4.5	5		4.1	4.8	4.5	4.2	4.2	42.0	
44.0	3	3.8	4.5	4.2		3.5	4.2	4.6		3.7	4.5	4.2	3.9	3.9	44.0	
46.0	2.8	3.5	4.2	3.7		3.3	3.9	4		3.5	4.2	4	3.7	3.7	46.0	
48.0	2.7	3.3	3.9	3.2		3.1	3.7	3.6		3.3	3.8	3.7	3.4	3.4	48.0	
50.0	2.5	3	3.5	2.8		2.9	3.4	3.1		3.1	3.4	3.4	3.1	3.1	50.0	
52.0	2.3	2.8	3.1	2.4		2.7	3.1	2.7		3	3	3.1	2.9	2.9	52.0	
54.0	2.1	2.6	2.7	2		2.5	2.9	2.3		2.8	2.6	2.8	2.8	2.7	54.0	
56.0	1.8	2.3	2.3	1.6		2.3	2.6	1.9		2.6	2.3	2.5	2.6	2.5	56.0	
58.0						2.1	2.3	1.6		2.4	1.9	2.2	2.4	2.3	58.0	
60.0						1.9	2	1.2		2.2	1.6	1.9	2.1	2	60.0	
62.0										2	1.3	1.6	1.8	1.7	62.0	
64.0												1.4	1.5	1.4	64.0	
66.0												1.1	1.3	1.2	66.0	
68.0													1.1	1	68.0	
70.0															70.0	
72.0															72.0	
74.0															74.0	
Reeving	3					3					2		2	2	2	Reeving
Hook	25 t														Hook	
Telescoping mode	I	1	1	2	3		1	2	3		2	3	3	3	4	I
	II	2	3	3	3		3	3	3		3	3	3	3	4	II
	III	3	3	3	3		3	3	3		3	3	3	4	4	III
	IV	3	3	3	3		3	3	3		3	3	3	4	4	IV
	V	3	3	3	2		3	3	3		3	3	3	4	4	V
	VI	3	3	2	2		3	3	2		3	3	3	4	4	VI
	VII	3	2	2	2		3	2	2		3	2	3	4	4	VII

Table 9-1 Main boom

Unit: t

Outriggers completely extended 8.2 m, with 27 t counterweight, counterweight moved backwards, over full range																
Working radius (m)	Boom length (m)														Working radius (m)	
	13.9★	18.6	18.6	18.6	18.6	18.6	18.6	18.6★	23.3	23.3	23.3	23.3	23.3	23.3		23.3★
3.0	108.	48.5	55	72	75	92	93								3.0	
3.5	102.	46	55	70	75	90	91	22	46	51.0	70.0	75.0	89	89	3.5	
4.0	98.0	43.5	55	68	75	86	86.5	21	44	48.0	68.0	72.0	84	85	4.0	
4.5	93.0	41.7	55	65	75	85	85	20	42	46.0	66.0	70.0	77	78	4.5	
5.0	87.0	39.5	55.0	61.0	75.0	79	79	19	40	44.0	63.0	67.0	71	71	5.0	
6.0	78.0	36.5	49.0	54.2	73.0	72.5	73.0	18.0	36.0	39.0	56.0	60.0	63.5	64.0	6.0	
7.0	49.1	33.5	44.5	48.2	66.0	67.1	56.4	16.7	32.4	35.9	50.9	54.9	61.9	58.0	7.0	
8.0	40.2	31.5	40.5	44.0	58.0	58.2	40.9	15.3	30.0	32.5	46.0	50.0	48.8	43.7	8.0	
9.0	35.0	29.5	37.5	40.6	48.3	44.5	35.6	14.2	27.5	30.0	42.0	46.0	37.6	34.6	9.0	
10.0	30.5	27.5	34.0	36.9	37.7	34.3	30.2	13.2	25.5	27.5	39.0	42.0	32.1	31.3	10.0	
12.0		24.5	30.0	31.4	26.2	24.8	24.3	11.5	22.5	23.5	32.0	31.3	25.4	24.6	12.0	
14.0		22.5	25.0	23.8	20.5	20.0	19.4	10.0	19.6	21.0	24.0	23.2	20.6	19.7	14.0	
16.0								9.0	17.5	18.5	19.0	17.9	16.9	15.4	16.0	
18.0								8.2	15.8	16.7	15.0	14.0	13.3	11.9	18.0	
20.0															20.0	
22.0															22.0	
24.0															24.0	
26.0															26.0	
28.0															28.0	
30.0															30.0	
32.0															32.0	
34.0															34.0	
36.0															36.0	
38.0															38.0	
40.0															40.0	
42.0															42.0	
44.0															44.0	
46.0															46.0	
48.0															48.0	
50.0															50.0	
52.0															52.0	
54.0															54.0	
56.0															56.0	
58.0															58.0	
60.0															60.0	
62.0															62.0	
64.0															64.0	
66.0															66.0	
68.0															68.0	
70.0															70.0	
Reeving	14	13						13						Reeving		
Hook	110 t														Hook	
Telescoping mode	I	1	1	1	1	1	1	1	1	1	1	1	1	1	2	I
	II	1	1	1	1	1	1	2	1	1	1	1	1	2	2	II
	III	1	1	1	1	1	2	1	1	1	1	1	2	2	1	III
	IV	1	1	1	1	2	1	1	1	1	1	2	2	1	1	IV
	V	1	1	1	2	1	1	1	1	1	2	2	1	1	1	V
	VI	1	1	2	1	1	1	1	1	2	2	1	1	1	1	VI
	VII	1	2	1	1	1	1	1	3	2	1	1	1	1	1	VII

Table 9-2 Main boom

Unit: t

Outriggers completely extended 8.2 m, with 27 t counterweight, counterweight moved backwards, over full range																
Working radius (m)	Boom length (m)														Working radius (m)	
	28	28	28	28	28	28	28★	32.7	32.7	32.7	32.7	32.7	32.7	32.7★		
3.0															3.0	
3.5															3.5	
4.0	23.0	21.0	42.0	52.0	67.0	76.0	76.0								4.0	
4.5	22.0	20.5	40.0	51.0	62.0	73.0	75.0								4.5	
5.0	21.0	18.5	37.0	49.0	58.0	72.0	73.0	15.0	19.0	16.0	40.0	51.0	63.0	65.0	5.0	
6.0	20.0	16.6	34.0	44.5	52.0	63.0	64.0	13.5	18.0	15.0	36.5	47.0	59.0	64.0	6.0	
7.0	18.1	15.0	31.0	39.9	47.1	58.0	59.0	12.5	16.5	13.8	33.4	42.9	53.0	58.0	7.0	
8.0	16.5	13.5	28.0	37.0	43.0	56.0	50.1	11.3	15.0	12.5	30.0	39.0	48.0	56.0	8.0	
9.0	15.6	12.5	25.6	34.0	39.5	50.7	38.5	10.4	14.0	11.5	28.0	35.5	45.0	43.7	9.0	
10.0	14.6	11.5	23.8	32.0	36.5	42.0	32.2	9.6	12.8	10.5	26.5	33.0	42.0	35.5	10.0	
12.0	13.2	9.8	20.5	28.0	31.5	27.9	25.3	8.3	11.0	8.7	23.0	28.2	31.8	25.3	12.0	
14.0	12.0	8.6	18.0	24.5	24.6	21.2	20.3	7.1	9.8	7.7	20.0	24.9	23.6	20.6	14.0	
16.0	11.0	7.5	16.0	20.4	19.1	17.5	16.4	6.3	8.6	6.7	18.0	20.5	18.6	16.8	16.0	
18.0	9.8	6.8	14.3	16.6	15.4	14.5	12.8	5.7	7.8	5.9	16.5	16.4	14.7	13.5	18.0	
20.0	8.9	6.1	13.0	13.5	12.4	11.8	10.2	5.2	7.0	5.3	14.8	13.6	12.0	10.6	20.0	
22.0	8.1	5.5	12.0	11.2	10.3	9.6	8.1	4.7	6.4	4.8	12.5	11.1	9.9	8.6	22.0	
24.0								4.2	6.0	4.3	10.6	9.4	8.2	6.9	24.0	
26.0								3.9	5.5	4.0	9.1	8.0	6.8	5.5	26.0	
28.0															28.0	
30.0															30.0	
32.0															32.0	
34.0															34.0	
36.0															36.0	
38.0															38.0	
40.0															40.0	
42.0															42.0	
44.0															44.0	
46.0															46.0	
48.0															48.0	
50.0															50.0	
52.0															52.0	
54.0															54.0	
56.0															56.0	
58.0															58.0	
60.0															60.0	
62.0															62.0	
64.0															64.0	
66.0															66.0	
68.0															68.0	
70.0															70.0	
Reeving	11							9							Reeving	
Hook	90 t														Hook	
Telescoping mode	I	1	1	1	1	1	1	2	1	1	1	1	1	2	I	
	II	1	1	1	1	1	2	2	1	1	1	1	1	2	2	II
	III	1	1	1	1	2	2	2	1	1	1	1	2	2	2	III
	IV	1	1	1	2	2	2	1	1	1	1	2	2	2	2	IV
	V	1	1	2	2	2	1	1	1	2	3	2	2	2	1	V
	VI	2	3	2	2	1	1	1	3	3	2	2	2	1	1	VI
	VII	3	2	2	1	1	1	1	3	2	2	2	1	1	1	VII

Table 9-3 Main boom

Unit: t

Outriggers completely extended 8.2 m, with 27 t counterweight, counterweight moved backwards, over full range																
Working radius (m)	Boom length (m)														Working radius (m)	
	37.4	37.4	37.4	37.4	37.4	37.4	37.4	37.4 ★	42.1	42.1	42.1	42.1	42.1	42.1		42.1 ★
3.0																3.0
3.5																3.5
4.0																4.0
4.5																4.5
5.0																5.0
6.0																6.0
7.0	13.0	12.0	14.5	18.5	36.0	48.0	55.0									7.0
8.0	12.5	11.0	13.5	17.0	33.0	44.0	51.0	10.5	12.0	15.0	18.9	23.0	38.0	45.0		8.0
9.0	11.5	10.0	12.5	15.6	31.0	40.0	47.0	9.6	11.2	14.0	17.4	21.0	35.0	44.0		9.0
10.0	10.6	9.2	11.5	14.5	29.0	38.0	41.5	8.8	10.3	12.8	16.0	19.5	33.0	41.0		10.0
12.0	9.3	7.9	10.0	12.3	25.0	33.0	28.2	7.5	8.8	11.1	13.8	16.8	29.0	30.8		12.0
14.0	8.2	6.9	8.6	10.6	22.0	25.2	20.4	6.4	7.7	9.7	12.0	14.7	26.0	22.3		14.0
16.0	7.3	6.0	7.7	9.4	20.0	19.6	16.8	5.6	6.8	8.5	10.6	12.9	21.0	16.8		16.0
18.0	6.5	5.3	6.8	8.3	17.7	15.9	14.2	5.0	6.0	7.6	9.5	11.5	16.8	14.2		18.0
20.0	5.9	4.6	6.2	7.3	14.5	12.8	11.3	4.4	5.4	6.7	8.5	10.4	13.9	12.3		20.0
22.0	5.3	4.2	5.6	6.7	12.2	10.7	9.3	3.9	4.9	6.0	7.8	9.4	11.5	10.1		22.0
24.0	4.9	3.8	5.1	6.0	10.3	9.0	7.6	3.5	4.4	5.4	7.0	8.5	9.8	8.5		24.0
26.0	4.5	3.4	4.6	5.6	8.8	7.5	6.3	3.2	4.0	5.0	6.4	7.7	8.3	7.0		26.0
28.0	4.2	3.1	4.2	5.0	7.5	6.4	5.2	2.8	3.6	4.4	5.9	7.0	7.1	5.9		28.0
30.0	3.9	2.8	4.0	4.6	6.5	5.4	4.2	2.6	3.3	4.0	5.4	6.4	6.1	4.9		30.0
32.0									2.3	3.0	3.7	5.0	5.8	5.3	4.0	32.0
34.0									2.1	2.7	3.4	4.6	5.3	4.4	3.3	34.0
36.0																36.0
38.0																38.0
40.0																40.0
42.0																42.0
44.0																44.0
46.0																46.0
48.0																48.0
50.0																50.0
52.0																52.0
54.0																54.0
56.0																56.0
58.0																58.0
60.0																60.0
62.0																62.0
64.0																64.0
66.0																66.0
68.0																68.0
70.0																70.0
Reeving	8							6							Reeving	
Hook	90 t							55 t							Hook	
Telescoping mode	I	1	1	1	1	1	1	2	1	1	1	1	1	1	2	I
	II	1	1	1	1	1	2	2	1	1	1	1	1	2	2	II
	III	1	1	1	1	2	2	2	1	1	1	2	3	2	2	III
	IV	1	1	2	3	2	2	2	1	2	3	3	2	2	2	IV
	V	2	3	3	2	2	2	2	3	3	3	2	2	2	2	V
	VI	3	3	2	2	2	2	1	3	3	2	2	2	2	2	VI
	VII	3	2	2	2	2	1	1	3	2	2	2	2	2	1	VII

Table 9-4 Main boom

Unit: t

Outriggers completely extended 8.2 m, with 27 t counterweight, counterweight moved backwards, over full range																
Working radius (m)	Boom length (m)														Working radius (m)	
	46.8	46.8	46.8	46.8	46.8	46.8	46.8★	51.5	51.5	51.5	51.5	51.5	51.5	51.5★		
3.0															3.0	
3.5															3.5	
4.0															4.0	
4.5															4.5	
5.0															5.0	
6.0															6.0	
7.0															7.0	
8.0															8.0	
9.0	10.2	12.0	14.5	18.5	23.5	35.5	38.0								9.0	
10.0	9.3	11.0	14.0	17.3	21.8	33.0	35.5	10.0	11.6	14.2	18.5	23.5	29.0	30.0	10.0	
12.0	8.0	9.6	12.0	15.0	19.0	29.0	31.0	8.7	10.5	12.6	16.5	20.7	26.5	28.5	12.0	
14.0	7.1	8.4	10.6	13.2	16.5	25.5	24.5	7.6	9.0	11.3	14.5	18.3	23.5	24.2	14.0	
16.0	6.2	7.5	9.5	11.7	14.6	20.7	18.5	6.7	8.1	10.2	13.0	16.5	20.9	19.0	16.0	
18.0	5.6	6.7	8.5	10.5	13.0	16.5	14.4	6.0	7.2	9.1	11.9	14.8	16.3	15.3	18.0	
20.0	4.9	6.0	7.7	9.3	11.8	13.6	12.5	5.5	6.6	8.2	10.6	13.5	13.2	12.6	20.0	
22.0	4.4	5.5	6.8	8.3	10.6	11.2	11.0	5.0	6.0	7.5	9.6	12.3	11.0	10.3	22.0	
24.0	4.0	4.9	6.2	7.5	9.6	9.5	9.2	4.5	5.5	6.8	8.7	10.2	9.2	8.6	24.0	
26.0	3.7	4.6	5.6	6.9	8.8	8.0	7.8	4.1	5.0	6.3	7.9	8.5	7.8	7.2	26.0	
28.0	3.3	4.1	5.1	6.2	7.5	6.8	6.6	3.8	4.7	5.7	7.3	7.2	6.6	6.0	28.0	
30.0	3.0	3.8	4.7	5.7	6.5	5.8	5.6	3.4	4.3	5.3	6.7	6.2	5.5	5.0	30.0	
32.0	2.7	3.4	4.2	5.2	5.4	5.0	4.7	3.2	4.0	4.9	5.8	5.3	4.6	4.1	32.0	
34.0	2.6	3.1	4.0	4.7	4.7	4.2	3.9	3.0	3.7	4.5	4.8	4.5	3.8	3.4	34.0	
36.0	2.3	2.8	3.6	4.3	4.0	3.6	3.3	2.7	3.4	4.1	4.1	3.7	3.2	2.8	36.0	
38.0	2.1	2.6	3.3	4.0	3.3	3.0	2.7	2.5	3.1	3.7	3.5	3.2	2.6	2.2	38.0	
40.0								2.3	2.9	3.4	3.0	2.7	2.1	1.7	40.0	
42.0								2.1	2.6	3.1	2.6	2.1	1.6	1.3	42.0	
44.0															44.0	
46.0															46.0	
48.0															48.0	
50.0															50.0	
52.0															52.0	
54.0															54.0	
56.0															56.0	
58.0															58.0	
60.0															60.0	
62.0															62.0	
64.0															64.0	
66.0															66.0	
68.0															68.0	
70.0															70.0	
Reeving	5							4							Reeving	
Hook	55 t														Hook	
Telescoping mode	I	1	1	1	1	1	1	2	1	1	1	1	1	2	3	I
	II	1	1	1	1	2	3	2	1	1	1	2	3	3	2	II
	III	1	1	2	3	3	2	2	1	2	3	3	3	2	2	III
	IV	2	3	3	3	2	2	2	3	3	3	3	2	2	2	IV
	V	3	3	3	2	2	2	2	3	3	3	2	2	2	2	V
	VI	3	3	2	2	2	2	2	3	3	2	2	2	2	2	VI
	VII	3	2	2	2	2	2	2	3	2	2	2	2	2	2	VII

Table 9-5 Main boom

Unit: t

Outriggers completely extended 8.2 m, with 27 t counterweight, counterweight moved backwards, over full range																	
Working radius (m)	Boom length (m)														Working radius (m)		
	56.2	56.2	56.2	56.2	56.2	56.2 ★					60.9	60.9	60.9	60.9		60.9 ★	
3.0																3.0	
3.5																3.5	
4.0																4.0	
4.5																4.5	
5.0																5.0	
6.0																6.0	
7.0																7.0	
8.0																8.0	
9.0																9.0	
10.0																10.0	
12.0	9.3	10.8	13.5	17.5	21.7	24.5				9.5	11.7	14.6	18.5	19.0		12.0	
14.0	8.1	9.7	12.5	16.0	19.6	23.0				8.5	10.5	13.5	17.0	18.6		14.0	
16.0	7.2	8.6	11.3	14.5	17.8	19.6				7.7	9.5	12.3	15.5	18.0		16.0	
18.0	6.6	7.8	10.2	13.0	16.0	15.8				7.0	8.6	11.2	14.0	16.5		18.0	
20.0	6.0	7.2	9.3	12.0	13.6	12.8				6.4	7.9	10.3	13.0	12.9		20.0	
22.0	5.5	6.6	8.5	11.0	11.2	10.5				5.5	7.3	9.4	11.9	10.7		22.0	
24.0	5.0	6.0	7.8	10.0	9.4	8.8				5.3	6.7	8.8	9.7	8.9		24.0	
26.0	4.6	5.6	7.2	8.9	8.0	7.3				4.9	6.2	8.1	8.2	7.4		26.0	
28.0	4.2	5.2	6.7	7.6	6.6	6.1				4.6	5.8	7.4	7.0	6.2		28.0	
30.0	3.9	4.8	6.2	6.5	5.6	5.1				4.3	5.4	6.9	5.8	5.2		30.0	
32.0	3.7	4.5	5.7	5.6	4.7	4.1				3.9	5.1	5.9	4.9	4.2		32.0	
34.0	3.3	4.1	5.3	4.8	3.9	3.4				3.7	4.7	5.1	4.1	3.5		34.0	
36.0	3.1	3.8	4.7	4.0	3.2	2.7				3.5	4.4	4.3	3.4	2.8		36.0	
38.0	2.9	3.6	3.9	3.3	2.7	2.2				3.2	4.1	3.6	2.9	2.2		38.0	
40.0	2.7	3.3	3.3	2.8	2.2	1.6				3.0	3.8	3.0	2.3	1.7		40.0	
42.0	2.5	3.0	2.9	2.4	1.6	1.2				2.8	3.2	2.6	1.8	1.2		42.0	
44.0										2.6	2.7	2.2	1.5	0.9		44.0	
46.0																46.0	
48.0																48.0	
50.0																50.0	
52.0																52.0	
54.0																54.0	
56.0																56.0	
58.0																58.0	
60.0																60.0	
62.0																62.0	
64.0																64.0	
66.0																66.0	
68.0																68.0	
70.0																70.0	
Reeving	4										3					Reeving	
Hook	55 t										25 t					Hook	
Telescoping mode	I	1	1	1	1	2	3				1	1	1	2	3	I	Telescoping mode
	II	1	1	2	3	3	3				1	2	3	3	3	II	
	III	2	3	3	3	3	2				3	3	3	3	3	III	
	IV	3	3	3	3	2	2				3	3	3	3	2	IV	
	V	3	3	3	2	2	2				3	3	3	2	2	V	
	VI	3	3	2	2	2	2				3	3	2	2	2	VI	
	VII	3	2	2	2	2	2				3	2	2	2	2	VII	

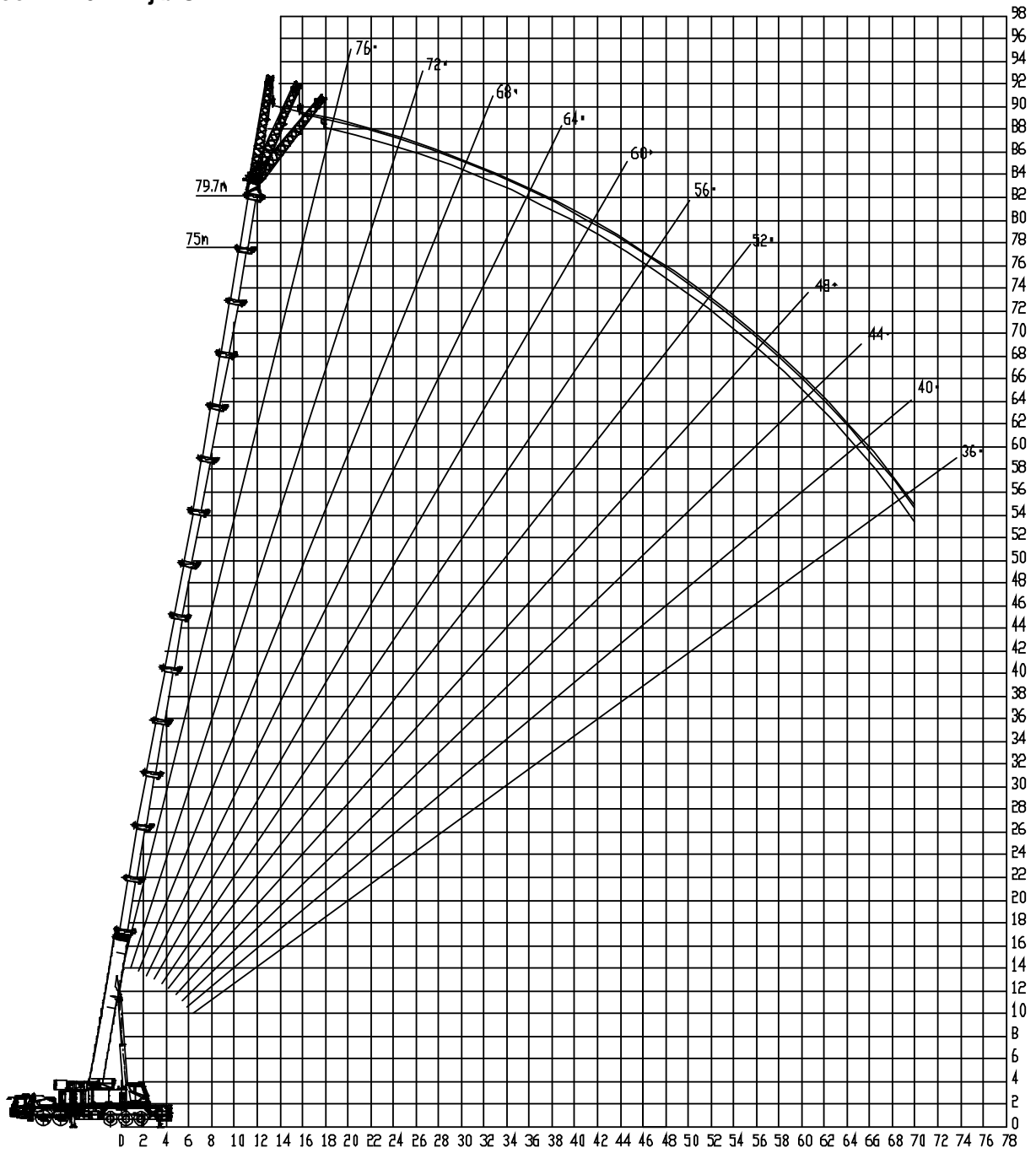
Table 9-6 Main boom

Unit: t

Outriggers completely extended 8.2 m, with 27 t counterweight, over full range																	
Working radius (m)	Boom length (m)														Working radius (m)		
	65.6	65.6	65.6	65.6★		70.3	70.3	70.3★		75	75★	79.7★	83.1★	85★			
3.0															3.0		
3.5															3.5		
4.0															4.0		
4.5															4.5		
5.0															5.0		
6.0															6.0		
7.0															7.0		
8.0															8.0		
9.0															9.0		
10.0															10.0		
12.0															12.0		
14.0	9.3	11.0	14.0	15.0											14.0		
16.0	8.4	10.2	13.0	14.6		9.0	10.8	12.0		9.0	9.5				16.0		
18.0	7.7	9.4	12.0	14.2		8.2	10.0	11.7		8.5	9.3	7.2			18.0		
20.0	7.1	8.7	11.0	13.4		7.6	9.1	11.4		8.0	9.0	7.2	6.5	6.0	20.0		
22.0	6.5	8.0	10.0	11.0		7.1	8.5	10.7		7.5	8.8	7.0	6.3	5.8	22.0		
24.0	6.0	7.4	9.5	9.3		6.5	8.0	10.0		7.0	8.5	6.9	6.1	5.6	24.0		
26.0	5.5	6.9	8.6	7.7		6.1	7.5	8.2		6.6	8.0	6.7	6.0	5.5	26.0		
28.0	5.1	6.4	7.3	6.5		5.7	7.0	6.9		6.2	7.4	6.4	5.8	5.4	28.0		
30.0	4.8	6.0	6.2	5.5		5.3	6.6	5.8		5.8	6.3	6.0	5.6	5.3	30.0		
32.0	4.4	5.6	5.3	4.6		5.0	5.8	4.8		5.4	5.3	5.8	5.4	5.2	32.0		
34.0	4.1	5.3	4.4	3.7		4.7	4.9	4.0		5.0	4.4	5.0	5.2	5.0	34.0		
36.0	3.9	4.7	3.7	3.0		4.4	4.2	3.3		4.8	3.6	4.2	4.5	4.4	36.0		
38.0	3.7	4.0	3.1	2.4		4.1	3.5	2.7		4.0	3.0	3.5	3.8	3.7	38.0		
40.0	3.5	3.4	2.6	1.9		3.9	3.0	2.2		3.4	2.5	3.0	3.2	3.1	40.0		
42.0	3.2	3.0	2.1	1.5		3.5	2.4	1.7		2.9	2.1	2.4	2.6	2.5	42.0		
44.0	3.0	2.5	1.7	1.1		3.0	2.0	1.3		2.5	1.6	2.0	2.2	2.1	44.0		
46.0						2.5	1.6	1.0		2.0	1.3	1.6	1.8	1.7	46.0		
48.0										1.7	1.0	1.3	1.4	1.3	48.0		
50.0												1.0	1.1	1.0	50.0		
52.0															52.0		
54.0															54.0		
56.0															56.0		
58.0															58.0		
60.0															60.0		
62.0															62.0		
64.0															64.0		
66.0															66.0		
68.0															68.0		
70.0															70.0		
72.0															72.0		
74.0															74.0		
Reeving	3					3					2		2	2	2	Reeving	
Hook	25 t														Hook		
Telescoping mode	I	1	1	2	3		1	2	3		2	3	3	3	4	I	Telescoping mode
	II	2	3	3	3		3	3	3		3	3	3	3	4	II	
	III	3	3	3	3		3	3	3		3	3	3	4	4	III	
	IV	3	3	3	3		3	3	3		3	3	3	4	4	IV	
	V	3	3	3	2		3	3	3		3	3	3	4	4	V	
	VI	3	3	2	2		3	3	2		3	3	3	4	4	VI	
	VII	3	2	2	2		3	2	2		3	2	3	4	4	VII	

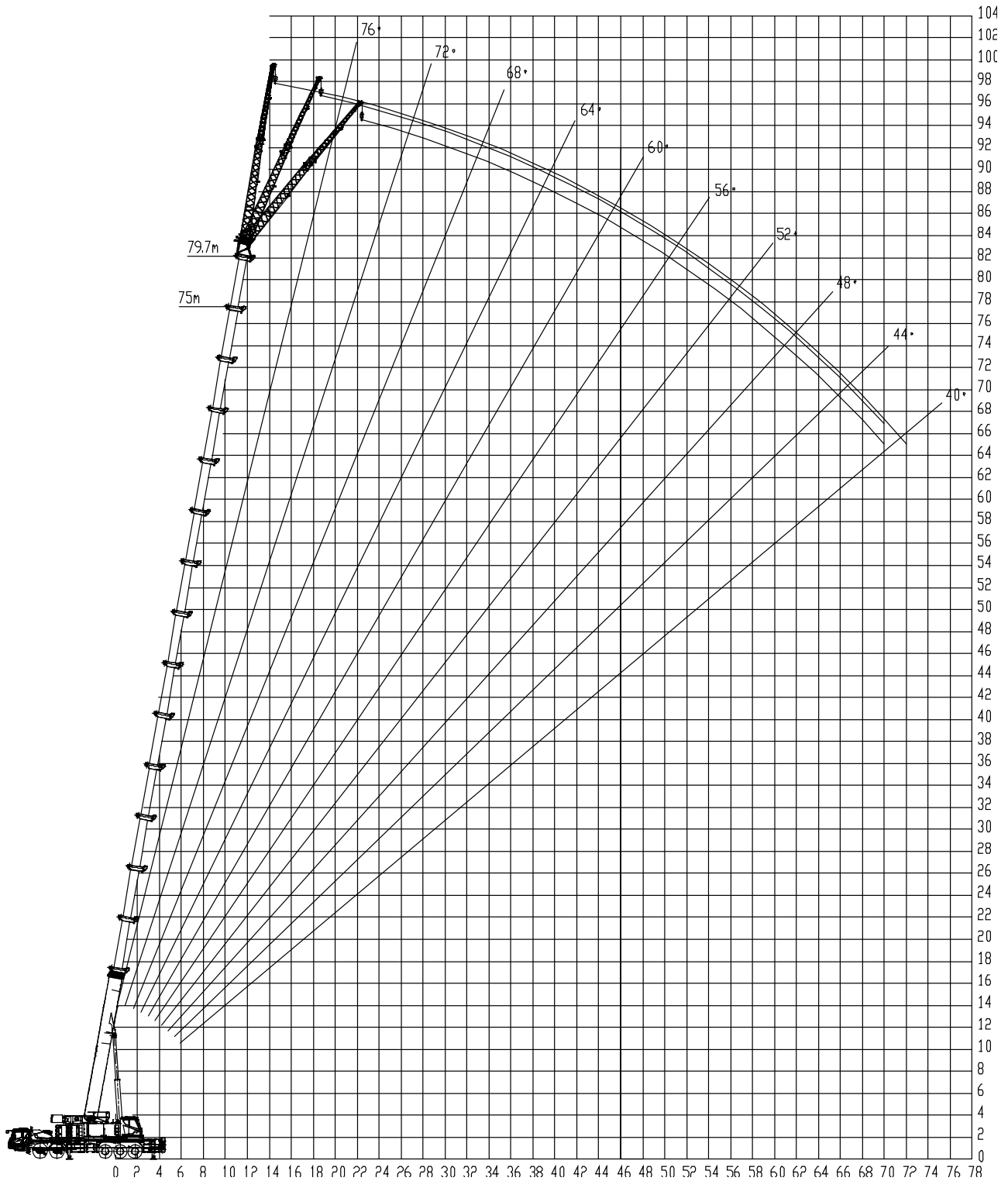
Lifting capacity tables / Lifting height charts

Main boom + 10.4 m jib OM



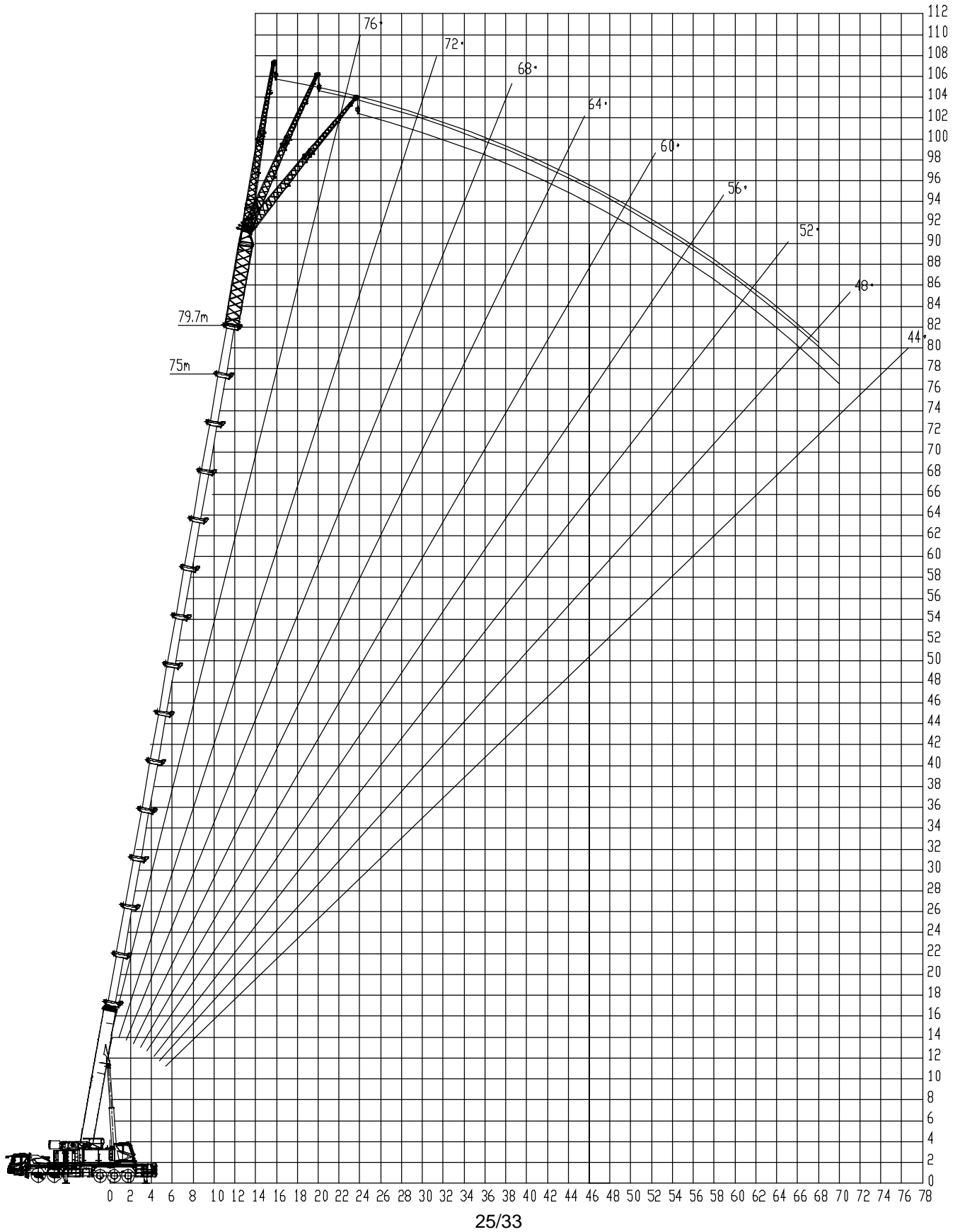
Lifting capacity tables / Lifting height charts

Main boom + 17.5 m jib OM



Lifting capacity tables / Lifting height charts

Main boom + 25.5 m jib OM



Lifting capacity tables / Lifting height charts

Main boom + 33.5 m jib OM

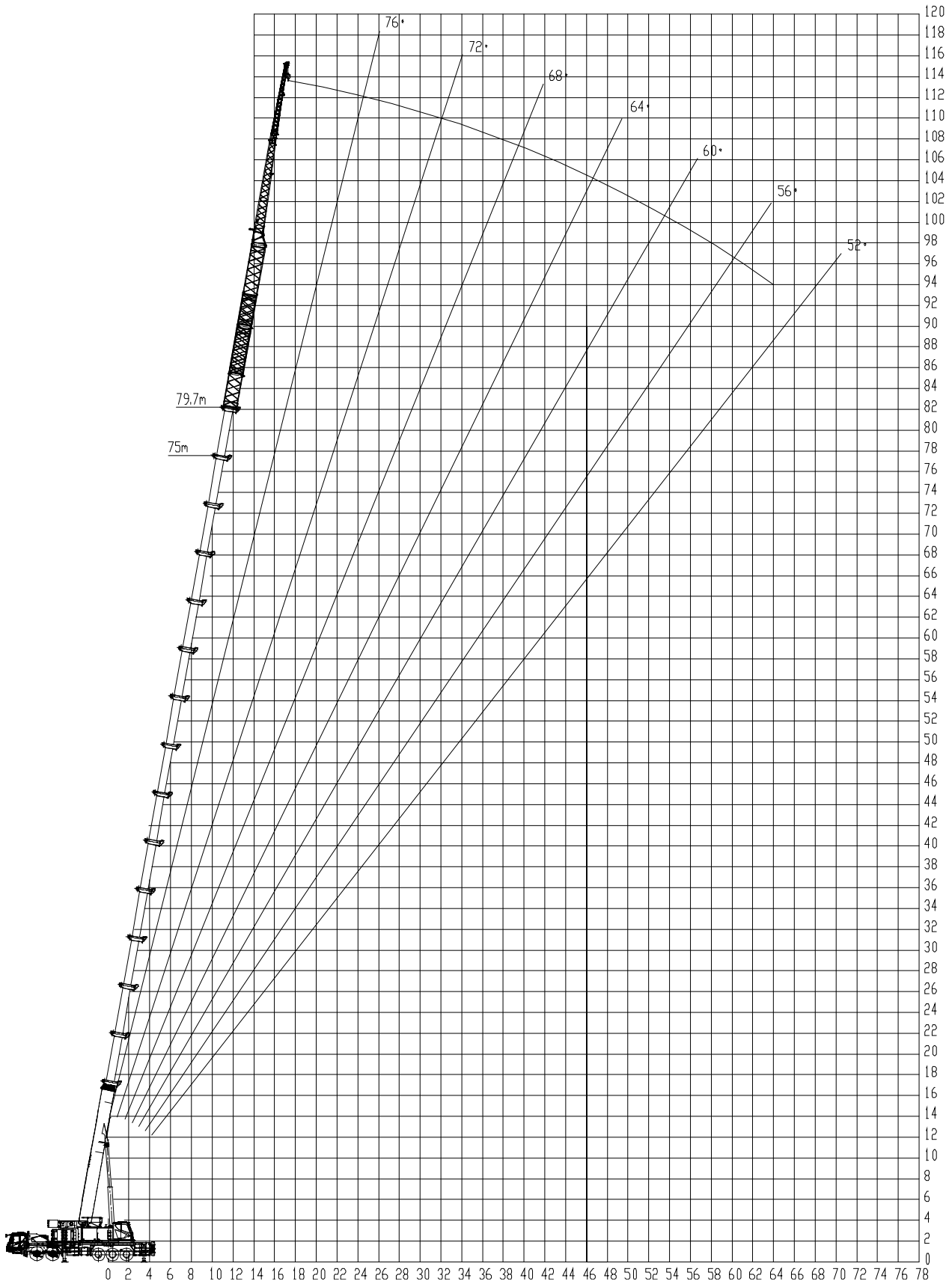


Table 10 Main boom + Jib

Unit: t

Outriggers completely extended 8.2 m, with 49 t counterweight, counterweight moved backwards, over full range																						
Working radius (m)	Main boom (m) + Jib (m)																				Working radius (m)	
	78.1			83			78.1			83			78.1			83			78.1	83		
	10.4			10.4			17.5			17.5			25.5			25.5			33.5	33.5		
	0°	15°	30°	0°	15°	30°	0°	15°	30°	0°	15°	30°	0°	15°	30°	0°	15°	30°	0°	0°		
20.0																					20.0	
22.0	5.5																				22.0	
24.0	5.5	5		4.5																	24.0	
26.0	5.5	5	4.5	4.5	4.2		3.6							2.5							26.0	
28.0	5.2	4.9	4.5	4.4	4.2	3.8	3.6	2.8		2.8				2.5			2				28.0	
30.0	4.9	4.6	4.4	4.2	4.1	3.8	3.5	2.8	2.5	2.8	2.4			2.5	2.2		2			1.6	30.0	
32.0	4.6	4.3	4.1	4	3.9	3.6	3.4	2.8	2.5	2.8	2.4	2		2.5	2.2	1.8	2	1.8		1.6	1.3	32.0
34.0	4.3	4.1	3.9	3.8	3.7	3.5	3.3	2.8	2.4	2.8	2.4	2		2.4	2.1	1.8	2	1.8		1.6	1.3	34.0
36.0	4	3.8	3.6	3.6	3.5	3.3	3.2	2.8	2.4	2.7	2.3	1.9		2.4	2.1	1.8	2	1.7	1.7	1.5	1.3	36.0
38.0	3.8	3.6	3.4	3.4	3.3	3.1	3.1	2.8	2.4	2.6	2.3	1.9	2.3	2.1	1.8	2	1.7	1.6	1.5	1.5	1.2	38.0
40.0	3.6	3.4	3.2	3.2	3.1	3	3	2.6	2.3	2.5	2.2	1.8	2.3	2	1.8	2	1.7	1.5	1.5	1.5	1.2	40.0
42.0	3.4	3.2	3	3	2.9	2.8	2.9	2.6	2.3	2.4	2.1	1.8	2.2	2	1.7	1.9	1.7	1.5	1.4	1.4	1.2	42.0
44.0	3.2	3	2.8	2.8	2.7	2.6	2.7	2.5	2.3	2.3	2.1	1.8	2.2	2	1.7	1.9	1.7	1.5	1.4	1.4	1.2	44.0
46.0	3	2.9	2.7	2.6	2.5	2.5	2.5	2.4	2.2	2.2	2	1.7	2.2	1.9	1.7	1.9	1.7	1.5	1.4	1.4	1.1	46.0
48.0	2.8	2.7	2.5	2.4	2.4	2.3	2.4	2.3	2.2	2.1	1.9	1.7	2.1	1.9	1.7	1.8	1.7	1.5	1.3	1.3	1.1	48.0
50.0	2.6	2.5	2.3	2.3	2.2	2.2	2.3	2.2	2.1	1.9	1.8	1.6	2	1.8	1.6	1.7	1.6	1.4	1.3	1.3	1.1	50.0
52.0	2.5	2.4	2.2	2.2	2.1	2.1	2.2	2.1	2	1.8	1.7	1.6	1.9	1.8	1.6	1.6	1.6	1.4	1.3	1.3	1.1	52.0
54.0	2.3	2.2	2	2	2	1.9	2	1.9	1.9	1.7	1.6	1.5	1.8	1.7	1.6	1.5	1.5	1.4	1.3	1.3	1.1	54.0
56.0	2.2	2.1	1.9	1.9	1.9	1.8	1.9	1.8	1.8	1.6	1.5	1.5	1.7	1.6	1.5	1.4	1.4	1.3	1.2	1.2	1.1	56.0
58.0	2.1	2	1.8	1.8	1.8	1.7	1.8	1.7	1.7	1.5	1.4	1.4	1.6	1.5	1.4	1.3	1.3	1.2	1.2	1.1	1	58.0
60.0	1.8	1.8	1.7	1.7	1.6	1.6	1.7	1.6	1.6	1.4	1.3	1.3	1.5	1.4	1.3	1.2	1.2	1.2	1.1	1	1	60.0
62.0	1.5	1.5	1.5	1.5	1.5	1.5	1.5	1.5	1.5	1.3	1.2	1.2	1.4	1.3	1.2	1.1	1.1	1.1	1	0.9	0.9	62.0
64.0	1.2	1.2	1.2	1.3	1.3	1.3	1.3	1.4	1.4	1.2	1.1	1.1	1.3	1.2	1.2	1.1	1.1	1	0.9	0.8	0.8	64.0
66.0	1	1	1	1.2	1.2	1.2	1.3	1.3	1.3	1.1	1	1	1.2	1.2	1.1	1	1	1				66.0
68.0	0.8	0.8	0.8	1	1	1.1	1.1	1.2	1.2	1	0.9	0.9	1.1	1.1	1.1	0.9	0.9	0.9				68.0
70.0				0.8	0.8	0.8	0.9	1	1	0.9	0.8	0.8	1	1	1		0.8	0.8				70.0
72.0								0.8	0.8	0.8				0.9	0.9	0.9						72.0
74.0														0.8	0.8	0.8						74.0
76.0																						76.0
78.0																						78.0
80.0																						80.0
82.0																						82.0
84.0																						84.0
86.0																						86.0
Reeving																						Reeving
Hook																						Hook

Note:

Telescoping combination of 75 m boom length: 3333332

Telescoping combination of 79.7 m boom length: 3333333

10.4 m jib: Adaptor + jib section I

17.5 m jib: Adaptor + jib section I + jib section II

25.5 m jib: 8 m Extension + adaptor + jib section I + jib section II

33.5 m jib: 8 m Extension + 8 m extension + adaptor + jib section I + jib section II

Components, superstructure

Main boom

- 8-section telescopic boom made of 960MPa high-tensile steel
- Optimal oviform boom profile of particular tensional rigidity, outstanding local stability and for the super lifting capacities
- Main boom length: 13.9 m - 85 m

Jib

- Jib variants: 10.4 m, 17.5 m, 25.5 m (One section of 8 m jib extension is available for options.), 33.5 m (Two sections of 8 m jib extension are available for options.)
- The jib cannot be attached with the vehicle during driving. During short-distance travelling, the jib is folded on the side of the main boom via the pins.

Telescoping system

- The telescopic boom is telescoped by the single-stage telescoping cylinder with hydraulic interlocking device.
- Rapid-cycle telescoping system with “automatic mode”, i.e. all-automatic telescoping to the desired boom length in sequence.

Hoist gear

- Hydraulic motor + planetary reducer
- The main and auxiliary winches can be operated independently or simultaneously.
- Imported high-performance rotation-resistant ropes can be used without swivel under load and can be arranged orderly on the drum; the press nipple can be used for rapid reeving change.

Luffing gear

- One hydraulic cylinder, providing the boom with smooth luffing movements from -0.5° to 80°

Slewing gear

- Two slewing gears, consisting of hydraulic motor and planetary reducer
- Slewing speed: 0 – 1.5 rpm

Slewing table

- Box-type, torsion resistant design of high-tensile steel, providing super load bearing capacity

Operator's cab

- 4.0 series spacious panoramic cab with sliding door, outward pushing windshield, front foot pedal, safe guard rail around the roof of the cab
- No instrument console and electric elements are in the front of the cab. And thus, you can have a good riding experience due to spacious room and comfortable feeling.
- Integrated bus key panel is compact, simple and reliable. Night vision background light is clear and makes night work safe.
- Vertical 10.4 inch two-in-one LCD (touch screen) integrates all of functions and has good observation angle. And thus, you can have good operation experience.

-
- It is with USB plug. And thus, it is chargeable.
 - The cab can be tilted for 0-20° to improve operator's field of vision and reduce the operation intensity.
 - Cab heater and air conditioning.

Counterweight

- 49t total counterweight among which 45t main body counterweights (5 pieces), 2t side counterweights (2 pieces)
- Counterweight combinations include 0t, 9t, 18t, 27t, 36t, 40t, 45t and 49t.

Hook

- Hook: 110t, 90t, 70t (ramshorn hook), 70t (single hook), 60t (ramshorn hook), 25t, 8t.
- Among which, 60t (ramshorn hook) and 8t hooks are standard configurations. The rest ones are available for options.

Hood

- In frame-type structure of high functionality and convincing design

Control system

- Superstructure operating mode consists of the electro-hydraulic proportional operation and the computer integrated control. Superstructure hydraulic system adopts open and closed combined system.
- It is of these functions such as the counterweight self-assembly and dismantling function, the operator's cab tilting angle adjustment function which has good starting and braking stability as well as the higher system reliability.

Monitoring system

- Applying the bus technology, the superstructure and the chassis can monitor the outrigger pressures and the tilting angle of the chassis frame in real time. And thus, prevent the dangerous situations from happening.
- The complete vehicle is equipped with several encoders and sensors which can monitor each system state of the vehicle in real time. Combining with the upgraded safety strategy, prevent the dangerous situations from happening. And thus, realize the high efficient safety operation.

Components, chassis

Engine

- Model: WP12.460E50
- Type: 6-cylinder in line, water-cooled diesel with 4 stroke cycles, turbo-charged, intercooled
- Displacement: 11.596 L
- Rated maximum power / RPM: 338 kW at 1900 r/min
- Max. output torque / RPM: 2110 N.m at 1000 -1400r/min
- Exhaust emission limit value: China V standard
- Capacity of diesel oil tank: 450 L.

Transmission

- Fast 12-gear 12JZSD220A +QH100 manual transmission
- 12 forward and 1 reverse speeds, with the power take-off port
- Mechanical and manual transmission

Axles

- Homemade 12 t + 12 t + 13 t + 13 t + 10 t axles special for Zoomlion truck crane
- Drive steer type: 10×6×6
- Axles 1 and 2 are steer and driven ones.
- Axles 3 and 4 are through and drive ones. They are equipped with the longitudinal differential and the transversal differential as well as the differential lock.
- Axle 5 is steer and drive one. It is equipped with the transversal differential and the differential lock.
- All of axles adopt the drum brakes.

Outrigger

- H type two sectional outrigger, box-shaped section, made of high-tensile steel ($\delta_s=960\text{MPa}$)

Tires

- Axles 1 and 2
Tire size: 385/95R25 radial tires, tubeless tire, single tire,
Tire pressure: 1.0 MPa
- Axles 3 and 4
Tire size: 325/95R24 radial tires, tubeless tire, double tire,
Tire pressure: 1.0 MPa
- Axle 5
Standard configuration:
Tire size: 325/95R24 radial tires, tubeless tire, single tire,
Tire pressure: 1.0 MPa
Optional configuration:
Tire size: 415/80R22 radial tires, tubeless tire, single tire,

Tire pressure: 0.93 MPa

Steering system

- 3 axles are mechanical and steer ones.
- Axles 1 and 2 adopt double-cylinder booster and axle 5 adopt single-cylinder booster.
- Double-channel integrated power steering gear with a limit unloading gear

Suspension

- Axles 1 and 2 adopt the longitudinally installed leaf spring suspension.
- Axles 3 and 4 adopt the leaf spring + the balance beam + the thrust rod bogie axle balance suspension.
- Axle 5 adopts the guide arm type pneumatic suspension. This type of suspension has a variation rigidity characteristic: obtain different load characteristics and rationally distribute axle loads among each axle by setting different air pressure values

Brake system

- It consists of service brake, parking brake (emergency brake) and auxiliary brake.
- Service brake: dual-circuit air brake system, acting on all of wheels of all of axles.
- Parking brake (Emergency brake): spring-loaded brake, acting on axles 2-5.
- Auxiliary brake: engine cylinder compression brake.
- It is a dual-circuit brake system. The brake of each axle adopts the drum brake. Each drum brake of axle 1 is equipped with two single diaphragm brake chambers. Each drum brake of axle 2 is equipped with two dual chamber diaphragm spring brake chambers. Each drum brake of axles 3,4 and 5 is equipped with one dual chamber diaphragm spring brake chamber.
- The brake system is with ABS.

Electrical system

- CAN data bus technology
- The instrument console in the driver's cab adopts the combination instrument which is convenient to check and distinguish the faults.
- Generator: 28 V, 80 A
- Two groups of batteries are series connected. And the rated voltage of each battery is 12 V.

Driver's cab

- The low-mounted, full-width and all-metal welded spacious driver's cab is with flexible lining.
- The control elements and displays are arranged according to ergonomic factors, thus for safe and convenient handling at permanent operation
- In addition, it can support you a comfortable riding experience and a broad field of vision.
- Besides, it is equipped with adjustable steering wheel, windshield washing device, electrically operated window, large combined multi-angle retroreflector, adjustable vibration-absorptive seats with high backrest and armrest.
- These equipments such as all kinds of electronic instruments, indicators, control switches, the cigarette lighter, USB interface, MP3 media player, adjustable cab heater defrost device and single-cooled air conditioning are arranged on the control console.